

SIA WOMEN IN SECURITY FORUM

Empowering Women. Influencing Change.

Table of Contents

[Current State of WISF](#)

[WISF Overview & Mission](#)

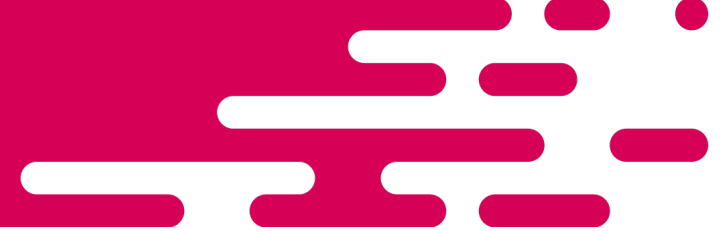
[Steering Committee Members](#)

[Why Members Join WISF](#)

[Subcommittees](#)

[Resources for WISF Members](#)

Overview



- Established in 2018 as a business networking community
- Currently 2,000+ WISF members representing all facets of the security industry
- Over 25% membership growth year over year
- 3,500 LinkedIn followers
- Monthly profile features on WISF members through SIA and its media partners

Annual Initiatives

- Delivers WISF keynote series at ISC West & ISC East
- Recognizes achievements of women in industry through Power 100 program
- Selects SIA Progress Award recipient
- Grants competitive scholarship awards
- Develops Security LeadHER conference with SIA/ASIS
- Organizes networking events and charitable giving campaigns

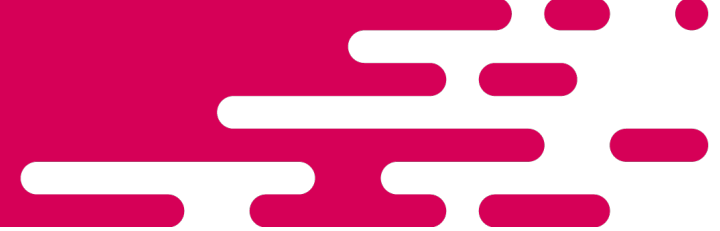
Key Programs & Initiatives

- Power 100 Recognition Program
- WISF Scholarship Program
- Security LeadHER Conference
- Essentials for Job Security - Dress for Success & Can Do Challenge
- SIA Progress Award



LEAD. INSPIRE. INNOVATE.

Mission & Focus of WISF



Mission

The Women in Security Forum supports the participation and retention of women in the security industry and provides opportunities that fosters growth and advancement.

Through career enrichment programs, professional development, and networking opportunities, the Forum engages Members, both men and women, who share this goal.

Vision

To engage all security professionals to promote, recruit, and cultivate women's leadership for a bolder presence within the industry.

CONNECT. GROW. IMPACT.

Goals

- Create programs to advocate for career advancement and growth opportunities
- Connect women in the industry through networking events
- Develop a recruiting program for next generation female professionals & leaders
- Initiate an ongoing dialogue between male & female leaders to enhance mutual understanding
- Create platforms that provide visibility for women (e.g., awards and recognition, speaker bureau & spotlights)
- Spearhead initiatives that create opportunities for women to work together & advance in leadership

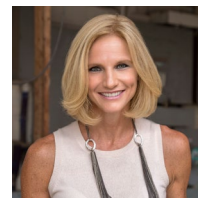
Steering Committee Members



Candice Aragon
PSA Security Network
Chair
Term Expires: 2027



Tia Eskandari
Allied Universal
Vice Chair
**Term Expires: 2027*



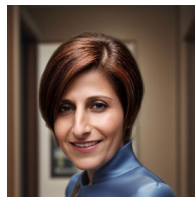
Alice DiSanto
ASI Robots
Immediate Past Chair
Term Expires: 2027



Sheryl Pickney-Maas
Guardian Zone
Term Expires: 2026



Tracy Larson
WeSuite
Term Expires: 2026



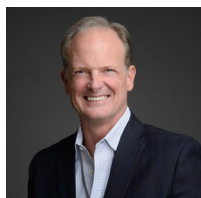
Mina Rawji
Dormakaba
Term Expires: 2027



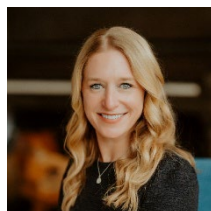
Beth Anderson
Allegion
Term Expires: 2027



Shawn Ruddo
Tech Systems, Inc.
Term Expires: 2027



Chris Peterson
Vector Firm
Term Expires: 2027



Emma Barkley
Johnson Controls
Term Expires: 2027



Katie Krug
Sage Integration
Term Expires: 2027



Jenna Hardie
Hivewatch
Term Expires: 2027



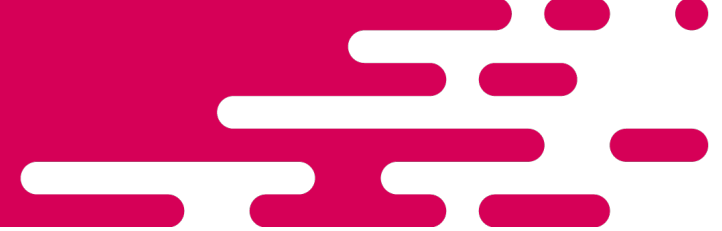
Carolina Restelli
HID
Term Expires: 2027



Jose Riobobos
i-PRO
Term Expires: 2027

**Eligible for consecutive two-year term*

Why Join WISF?



Delivering Value

Be part of a supportive professional community with shared interests & experiences

Exchange ideas & participate in meaningful conversations on issues impacting women in the security industry

Create inroads for women to join the security industry & move into leadership positions

Leading Change

Expand your professional network & connect with likeminded individuals, mentors & potential collaborators

Learn new skills, build self-confidence through professional development, & industry education

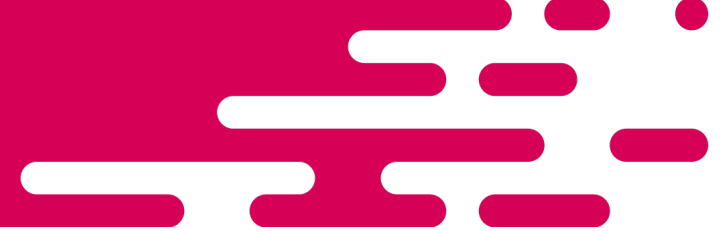
Become eligible for scholarships, awards & recognition programs, & publication features

Making a Difference

Communicate the value of DEI&B to stakeholders & create employee resource groups within your own organization

Participate in philanthropy events & charitable giving campaigns to support worthy causes

Volunteer on sub-committees & contribute to programs that empower women



Subcommittees With a Focus on Bringing Together the WISF Community

StrengthenHER

Business Strategy

- Develops resources to support women-owned businesses
- Arranges networking opportunities for those interested in entrepreneurial pathways in security

Co-Chair: Sheryl Pickney-Mass

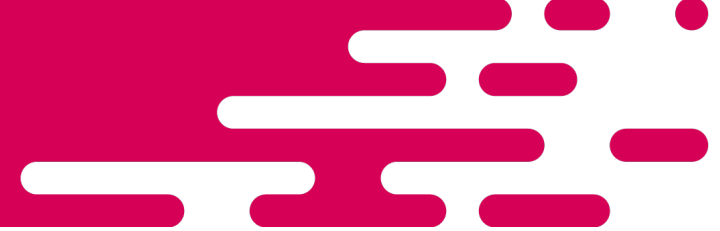
Co-Chair: Tracy Larson

EVENTS

Where WISF Can Connect

ISC West | Security LeadHER | ISC East

For additional networking events,
[visit SIA's website](#)



Subcommittees With a Focus on Bringing Together the WISF Community

NavigateHER

Opportunity & Advancement

- Creates professional development content & programs
- Oversees endowment project proposals
- Builds alliances with partner organizations on win-win career advancement opportunities

Co-Chair: Beth Anderson

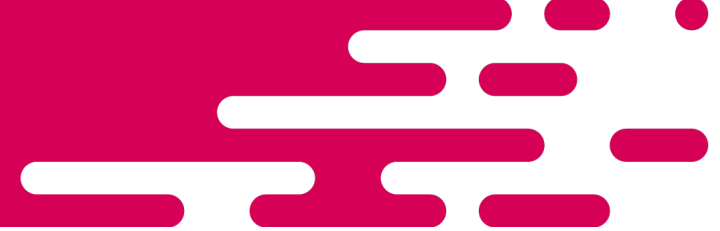
Co-Chair: Emma Barkley

EVENTS

Where WISF Can Connect

ISC West | Security LeadHER | ISC East

For additional networking events,
[visit SIA's website](#)



Subcommittees With a Focus on Bringing Together the WISF Community

AmbassadHER

Networking

- Oversees the recruitment of Members into the Forum
- Coordinates WISF Ambassador program activities
- Facilitates engagement opportunities with other women's organizations and internal company groups

Co-Chair: Mina Rawji

Co-Chair: Sahiti Ravi

EVENTS

Where WISF Can Connect

ISC West | Security LeadHER | ISC East

For additional networking events,
[visit SIA's website](#)



Subcommittees That Enable WISF to Grow

LeadHER

Conference

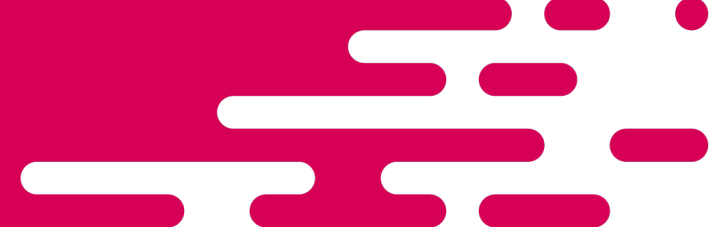
- Assists in planning and developing the conference content and event experience
- Collaborates with SIA/ASIS on programming activities and keynote speaker selection
- Helps to organize networking events and philanthropic activities associated with the event

EVENTS

Where WISF Can Connect

ISC West | Security LeadHER | ISC East

For additional networking events,
[visit SIA's website](#)



Subcommittees That Enable WISF to Grow

PropelHER

Recruitment

- Develops partnerships with feeder programs collegiate and professional athletes
- Promotes the intersection of sports and technology and highlights transferable skills

Co-Chair: Shawn Ruddo

Co-Chair: Alice DiSanto

EVENTS

Where WISF Can Connect

ISC West | Security LeadHER | ISC East

For additional networking events,
[visit SIA's website](#)

Grow.



Subcommittees That Enable WISF to Grow

AmplifiHER

Awards & Recognition

- Manages WISF Scholarship fundraising and recipient selection
- Coordinates honorary programs for WISF members

Co-Chair: Tia Eskandari

Co-Chair: Tanya Turner

EVENTS

Where WISF Can Connect

ISC West | Security LeadHER | ISC East

For additional networking events,
[visit SIA's website](#)



Subcommittees That Promote Inclusivity & Create Meaningful Opportunities

SupportHER

Allyship

- Cultivates male allyship through networking and engagement
- Collaborates with business leaders to leverage untapped resources
- Promotes the value of inclusivity and equal opportunity

Co-Chair: Chris Peterson

Co-Chair: Stephenie Haldane

EVENTS

Where WISF Can Connect

ISC West | Security LeadHER | ISC East

For additional networking events,
[visit SIA's website](#)



Subcommittees That Promote Inclusivity & Create Meaningful Opportunities

UpliftHER

Philanthropy

- Develop charitable giving programs that align with WISF mission & values
- Coordinate signature WISF philanthropic initiatives at industry events (Dress for Success, Can Do Challenge, etc.)
- Engage community stakeholders and civic volunteers

Co-Chair: Katie Krug

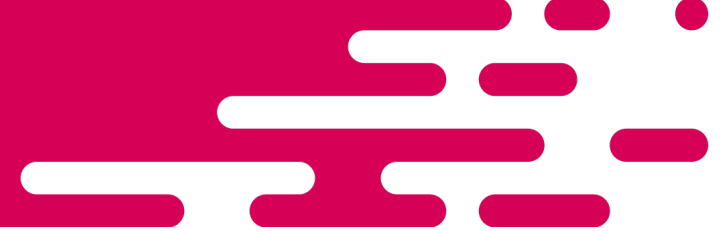
Co-Chair: Collen Bourbonais

EVENTS

Where WISF Can Connect

ISC West | Security LeadHER | ISC East

For additional networking events,
[visit SIA's website](#)



Subcommittees That Promote Inclusivity & Create Meaningful Opportunities

IlluminateHER

Outreach & PR

- Leads public relations and outreach efforts
- Produces quarterly newsletter and develops social media content
- Oversees the WISF Power 100 recognition program
- Collaborates with industry media outlets to highlight WISF members & initiatives

Co-Chair: Candice Aragon

Co-Chair: Jenna Hardie

EVENTS

Where WISF Can Connect

ISC West | Security LeadHER | ISC East

For additional networking events,
[visit SIA's website](#)

Resources

[WISF Homepage](#)

[Join WISF](#)

[WISF LinkedIn](#)

[Security LeadHER Conference](#)

[Events Link](#)

[Essentials for Job Security](#)

[Can Do Challenge](#)

[WISF Scholarship](#)



**Follow Us
on LinkedIn**